



September 2020

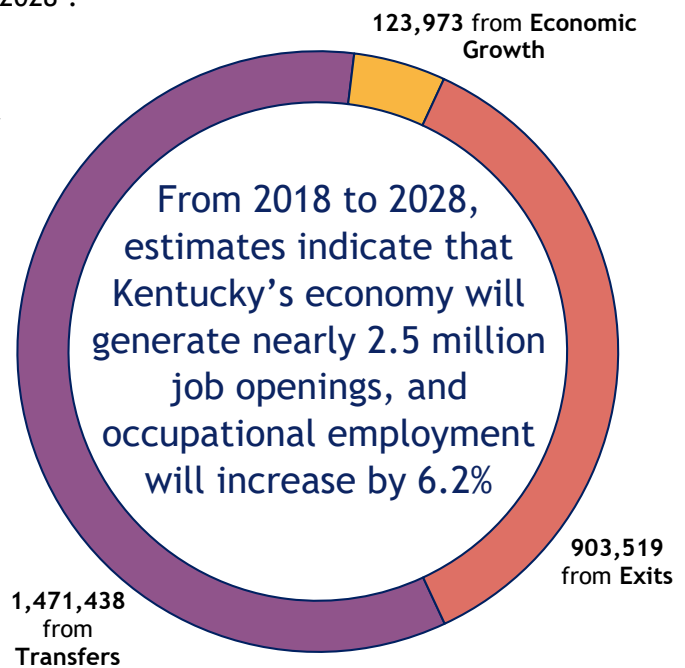
KENTUCKY LABOR FORCE UPDATE

2018-2028 Occupational Employment Projections

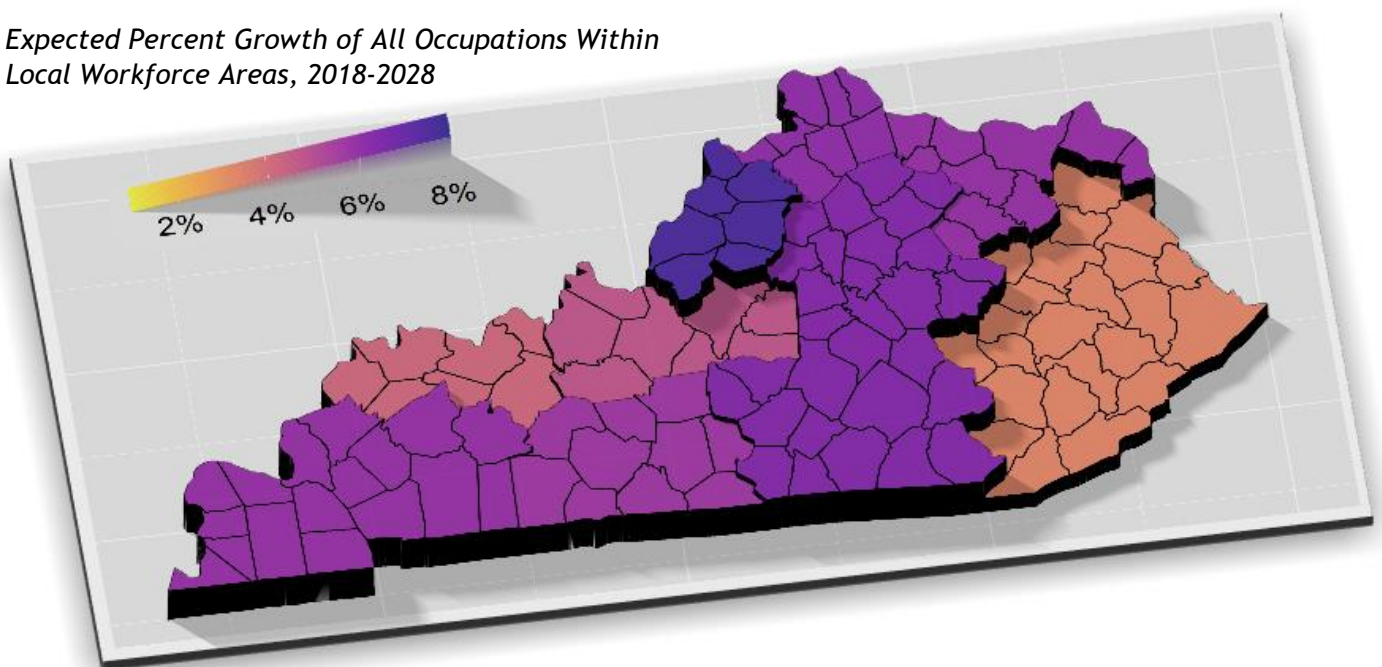
Occupational employment projections for hundreds of occupations in each of Kentucky's ten [Local Workforce Areas](#) (LWAs) are now available from KYSTATS' Labor Market Information (LMI) section. Produced using industry employment time series data and occupational staffing pattern estimates from statistical programs operated by KYSTATS, these projections encompass the period from 2018 to 2028¹.

Estimates indicate that Kentucky's total occupational employment will increase from 1,995,952 in 2018 to 2,119,925 by 2028 (a 6.2% change). This growth is expected to account for 123,973 job openings. Economic growth, however, is not the only source of job openings; occupational openings may also be generated by individuals exiting the workforce (e.g. retirements) and by individuals transferring to other occupations. By 2028, exits are expected to produce 903,519 job openings, and transfers (the most common source of openings) are expected to produce 1,471,438.

Kentucky's ten LWAs are expected to experience uneven growth, with each area growing by at least 3.3% by 2028. The fastest growing areas, Kentuckiana Works, Bluegrass, and Cumberlands, may experience growth of 7.6%, 6.4%, and 6.4%, respectively. EKCEP is likely to be the most affected by exits from the labor force, with exits comprising as much as 39% of total job openings in the area over the next decade (see next page for full LWA estimates).



Expected Percent Growth of All Occupations Within Local Workforce Areas, 2018-2028





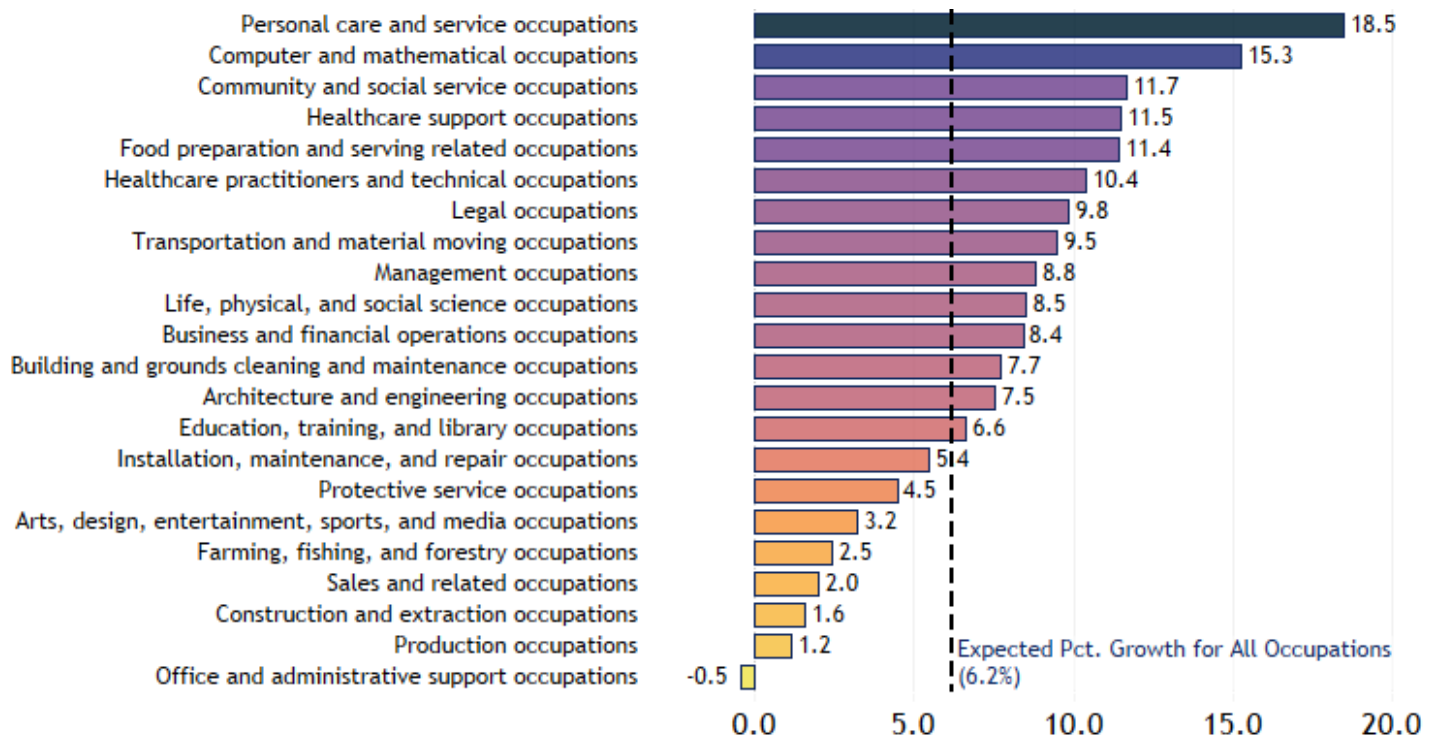
2018-2028 Occupational Employment Projections

2018-2028 Projection Summary - Kentucky Local Workforce Areas

Area	2018 Estimated Employment	2028 Projected Employment	Total Change (Growth)	Percent Change	Exits	Transfers	Total Openings
Bluegrass	398,638	423,978	25,340	6.4	179,597	291,279	496,216
Cumberlands	116,033	123,425	7,392	6.4	54,631	85,630	147,653
EKCEP	113,171	116,941	3,770	3.3	52,367	79,056	135,193
Green River	92,901	96,804	3,903	4.2	41,945	68,347	114,195
Kentuckiana Works	564,703	607,546	42,843	7.6	253,290	420,278	716,411
Lincoln Trail	99,792	104,509	4,717	4.7	45,101	73,061	122,879
Northern Kentucky	219,291	232,643	13,352	6.1	98,608	164,344	276,304
South Central	125,083	132,237	7,154	5.7	57,789	93,192	158,135
TENCO	73,730	78,112	4,382	5.9	33,944	53,503	91,829
West Kentucky	163,395	173,056	9,661	5.9	74,483	121,251	205,395

Across the state, various types of occupations are also expected to experience uneven growth. Personal Care and Service Occupations (which includes personal aides) are likely to grow the fastest (with employment increasing by 18.5%). Other types of fast-growing occupations include Computer and Mathematical Occupations (15.3%), Community and Social Service Occupations (11.7%), and healthcare occupations, represented here by two occupational groups- Healthcare Support Occupations (11.5%) and Healthcare Practitioners and Technical Occupations (10.4%). Office and Administrative Support Occupations are the only occupational group expected to decline by 2028, potentially experiencing a loss of 1,356 jobs across the state.

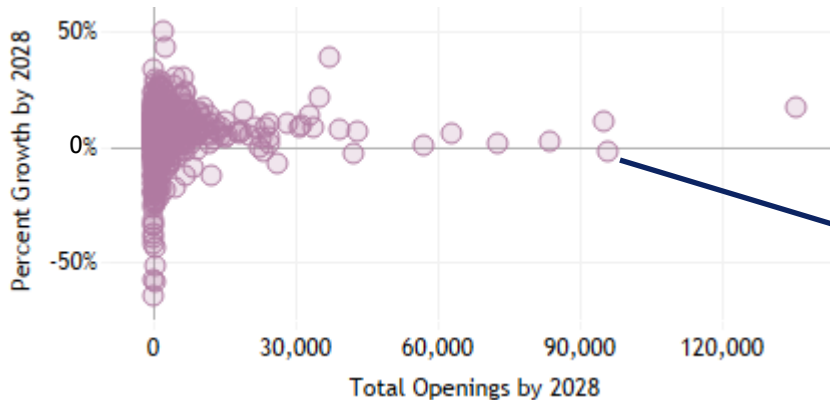
Expected Percent Growth of Major Occupational Groups, 2018-2028





2018-2028 Occupational Employment Projections

While useful to consider when discerning changing trends in the labor market, percent growth alone doesn't necessarily shed light on the volume of opportunities in various types of occupations that will be available to job seekers in the coming years. Take, for example, the case of Cashiers, which is an occupation that is expected to decline by 2028, but which is nonetheless expected to produce more than 96,000 job openings for workers in Kentucky. See below for a full summary of openings by occupational groups.



Occupational growth does not fully capture the volume of opportunities available to Kentucky workers. Cashiers, for example, is a declining occupation that will nonetheless produce more than 96,000 job openings by 2028.

2018-2028 Projection Summary- Major Occupational Groups in Kentucky

Occupational Title	2018 Estimated Employment	2028 Projected Employment	Change	Percent Change	Total Openings	Annual Openings
Architecture and engineering occupations	29,247	31,453	2,206	7.5	26,132	2,614
Arts, design, entertainment, sports, and media occupations	23,270	24,021	751	3.2	26,858	2,686
Building and grounds cleaning and maintenance occupations	59,853	64,471	4,618	7.7	85,517	8,552
Business and financial operations occupations	81,511	88,370	6,859	8.4	87,194	8,720
Community and social service occupations	29,374	32,797	3,423	11.7	35,716	3,571
Computer and mathematical occupations	33,562	38,685	5,123	15.3	31,670	3,167
Construction and extraction occupations	81,685	82,980	1,295	1.6	92,777	9,278
Education, training, and library occupations	94,157	100,372	6,215	6.6	90,739	9,074
Farming, fishing, and forestry occupations	7,143	7,318	175	2.5	11,792	1,180
Food preparation and serving related occupations	177,036	197,279	20,243	11.4	340,772	34,077
Healthcare practitioners and technical occupations	128,418	141,772	13,354	10.4	90,475	9,047
Healthcare support occupations	54,419	60,666	6,247	11.5	72,243	7,225
Installation, maintenance, and repair occupations	91,066	96,027	4,961	5.4	95,902	9,590
Legal occupations	12,161	13,357	1,196	9.8	9,542	955
Life, physical, and social science occupations	9,206	9,991	785	8.5	10,092	1,008
Management occupations	105,217	114,476	9,259	8.8	100,716	10,072
Office and administrative support occupations	293,373	292,017	-1,356	-0.5	345,069	34,506
Personal care and service occupations	71,931	85,236	13,305	18.5	130,581	13,057
Production occupations	200,680	203,021	2,341	1.2	235,580	23,558
Protective service occupations	38,841	40,575	1,734	4.5	42,373	4,237
Sales and related occupations	189,318	193,061	3,743	2.0	275,893	27,589
Transportation and material moving occupations	184,484	201,980	17,496	9.5	261,297	26,130
Total, all occupations	1,995,952	2,119,925	123,973	6.2	2,498,930	249,893



2018-2028 Occupational Employment Projections

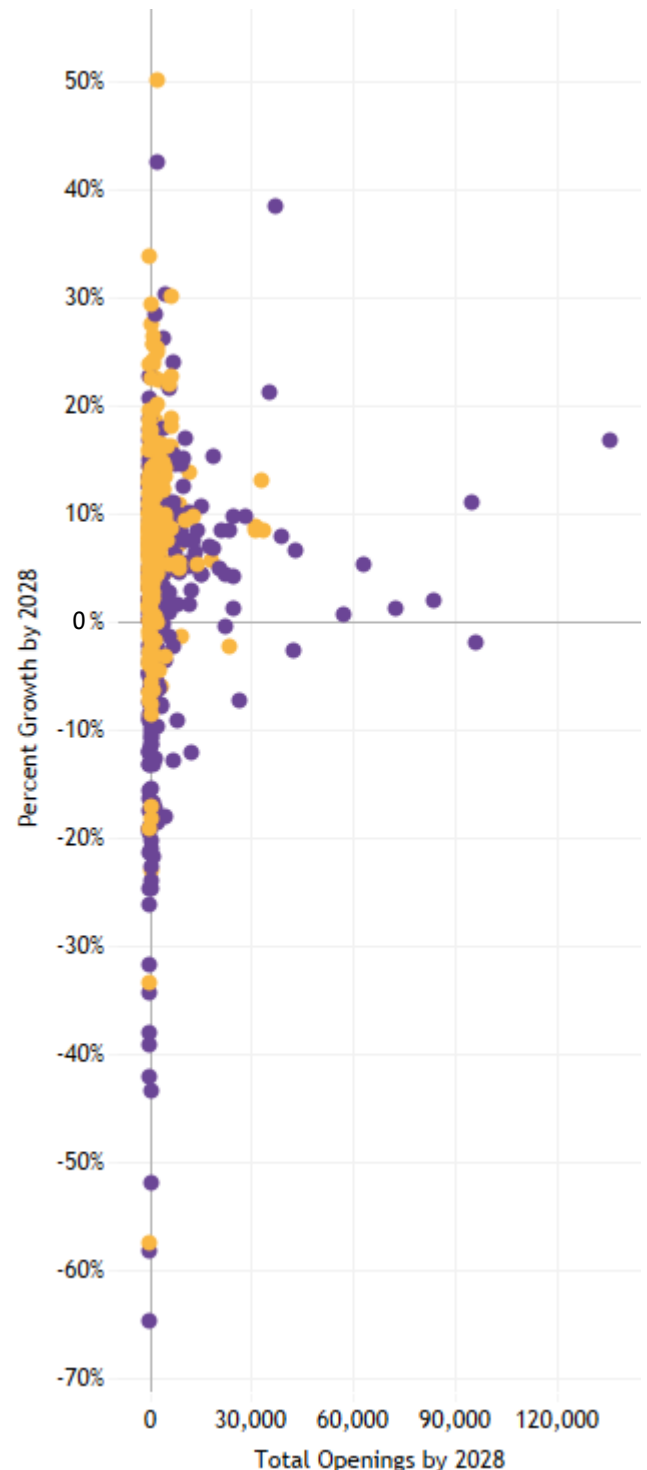
The U.S. Bureau of Labor Statistics assigns [typical levels of educational attainment](#) necessary for entry into specific occupations, and these assignments may be combined with KYSTATS' projections to analyze changing occupational employment trends as they relate to overall demand for educated workers.

Through 2028, 90% of openings that typically require some education beyond a high school degree will be in growth occupations.

From 2018 to 2028, occupations typically requiring a high school diploma or less will produce nearly three times the number of job openings as occupations requiring some education beyond high school (1,838,644 compared to 626,082). However, of the openings that will require more than a high school diploma, 90% are in occupations that will grow by 2028, while only 82% of openings requiring a high school diploma or less will be in growth occupations.

High school diplomas and Bachelor's Degrees are the two levels of educational attainment that typically grant workers entry to the widest variety of occupations, with the former qualifying workers for 265 unique occupations across the state, and the latter granting access to 154 additional occupations. Eighty-one unique occupations do not typically require any formal education credentials, and advanced postsecondary degrees (Masters', Doctoral, and other professional degrees) grant access to 80 occupations that lower levels of educational attainment do not.

*Projected Openings vs. Projected Growth of Specific Occupations Requiring a **High School Diploma or Less**, or **Some Additional Education***





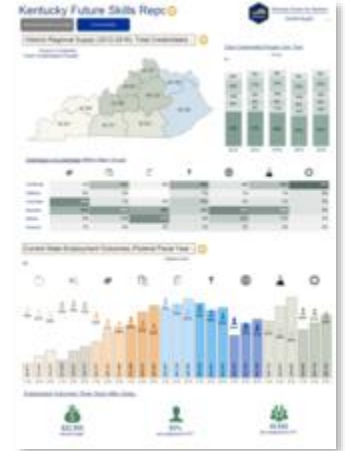
2018-2028 Occupational Employment Projections

A full release of the long-term (2018-2028) projections estimates (including hundreds of specific occupations for each LWA) is available for download on the [KYSTATS website](#). KYSTATS also publishes a complement of analytical products that utilize occupational projections, each of which will be updated in late 2020.



The **Occupational Outlook Dashboard** (shown left) is an interactive dashboard that provides users with a streamlined method of utilizing the 2018-2028 projections estimates. In particular, this dashboard integrates occupational wage and educational requirement data to augment the employment forecasts found in the projections release.

In an effort to highlight the supply and demand trends within Kentucky's workforce, the [Kentucky Future Skills Report](#) (shown right) offers an analysis of recent educational credentials earned in Kentucky, alongside five-year projections derived from the long-term projections summarized here.



Finally, the [Kentucky Career Explorer](#) is an interactive tool for Kentucky students and job-seekers that provides relevant occupational profiles (including employment projections and wage estimates) to users based on their self-identified content knowledge, skills and abilities.



1 Note that, given the base year of these projections (2018), the current economic events arising from the advent COVID-19 are not reflected in the industry employment data, nor the staffing pattern estimates used to generate these projections. As a result, the estimates presented here are not explicitly intended to characterize economic conditions during the pandemic.

Kentucky Labor Force Update

A monthly publication of the
Kentucky Center for Statistics (KYSTATS)
Jessica Cunningham, Ph.D., Executive Director
Ashley Jones, Labor Market Information Branch Manager

Kentucky Center for Statistics
500 Mero Street, 5th Floor SC
Frankfort, KY 40601
KYSTATS.KY.GOV

For requests and inquiries, contact
Kimberly Gester • KGester@ky.gov • 502.782.3066

Contributors to *Kentucky Labor Force Update* this month:
Sam Keathley, Kimberly Gester

This workforce product was funded by a grant awarded by the U.S. Department of Labor's Employment and Training Administration. The product was created by the recipient and does not necessarily reflect the official position of the U.S. Department of Labor. The U.S. Department of Labor makes no guarantees, warranties, or assurances of any kind, express or implied, with respect to such information, including any information on linked sites and including, but not limited to, accuracy of the information or its completeness, timeliness, usefulness, adequacy, continued availability, or ownership. This product is copyrighted by the institution that created it. Internal use by an organization and/or personal use by an individual for non-commercial purposes is permissible. ALL other uses require prior authorization by the copyright owner.

Published 9/28/2020